

SVD Print

OPERATING INSTRUCTION

FOR WIN XP SP 2



TEL.MED Medizintechnik GmbH
Breslauerstr. 2
D-85386 Eching

Subject to changes !

Table of contents

1 Introduction.....	3
2 Installing and configuring SVD Print.....	3
2.1 Chosing a computer for SVD Print.....	3
2.2 Setting up the SVD Monitor in the bluetooth environment.....	3
2.3 Installation of SVD Print.....	3
3 SVD Print Control.....	4
3.1 Status information.....	4
3.2 Menu Settings.....	5
3.2.1 Setting up SVD Monitor devices.....	5
3.2.2 Adding a new SVD Monitor.....	6
3.2.3 Own Address Entry.....	7
3.2.4 Configure Printer.....	8

1 Introduction

The SVD Print Software is capable of printing measurement from an SVD Monitor on a PC. Differing from the SVD Administration- and Documentation software, measurements are printed only, not stored in a database. The printing procedure is initiated on the SVD Monitor device. Once the software is installed and properly configured, no further actions have to be taken.

2 Installing and configuring SVD Print

2.1 Choosing a computer for SVD Print

SVD Print is running as Windows Service, thus it works like a server. In order to ensure a high availability of the print server, a PC should be chosen that is running permanently and rarely shut off. Ideally, this is a server not used as a work station. In case you are using a work station, please note it should be turned on continuously if possible.

2.2 Setting up the SVD Monitor in the bluetooth environment

Configuration of the SVD Monitor in the bluetooth environment can differ from the following description due to the variety of different operating systems and drivers.

- Open the bluetooth environment (e.g. in Windows XP: System properties -> Bluetooth Devices, but perhaps also via a link on your desktop or system tray)
- Turn your SVD Monitor device on
- Choose „Add“ (or, depending from your operating system, „Search for devices“, „Add device“ or similar)
- If you are using Windows XP Service Pack 2, activate the checkbox next to „Device is configured and can be detected“.
- All detected devices are displayed, among others your SVD Monitor
- Choose SVD Monitor from list and click „next“.
- You will be asked for a key. In Windows XP Service Pack 2 choose „Use key from documentation“ and enter key **1234**. Depending from the system and driver used this procedure may vary.
- **Important:** The device has been installed in your system, and it will tell you which serial interface has been assigned to the device. Please write down **outgoing and incoming** serial interface. Both will be needed later for configuration of SVD Print.

2.3 Installation of SVD Print

- Insert the CD into the CD-ROM drive.
- Installation should start automatically. Otherwise, open the CD-ROM-drive in explorer and execute svdinstall.exe manually.
- Follow instructions from the installation program. Depending from the software version you

purchased, SVD Print is either a stand-alone application or bundled with SDV Administration and Documentation software.

- After successful installation, you can open SVP Print via the Windows start menu or a link on your desktop.
- Configure SVD Print as described in the following chapter

3 SVD Print Control

SVD Print contains the application SVD Print Control, which is needed to configure the print server. It can be opened via the Windows start menu or a link on your desktop.

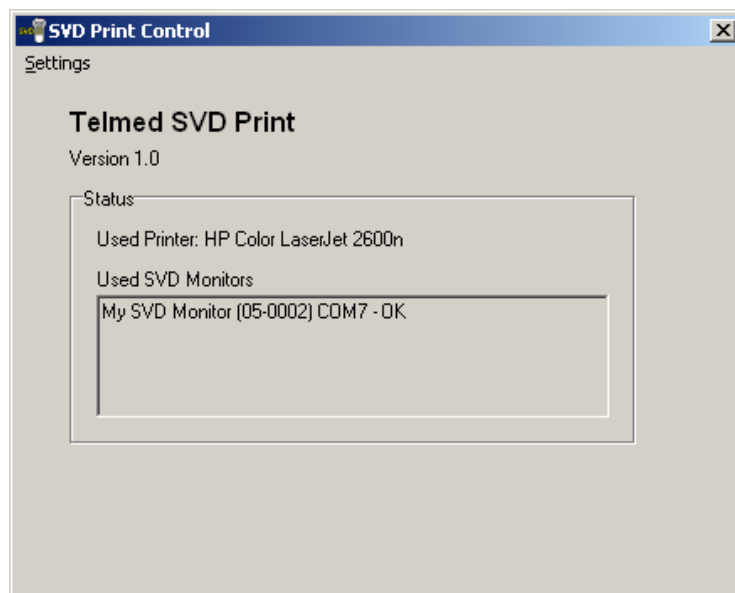


Figure 1: SVD Print Control

3.1 Status information

In the status group, information on operating status of the print server is displayed.

Printer in use

Here, the printer is displayed measurements are printed on.

Configured SVD Monitors

Here, all SVD Monitors are listed that have been accepted by the print server. For each SVD Monitor, following information is displayed:

- Name of SVD Monitor

- Serial Number
- Assigned incoming serial interface
- Status of serial interface (OK or Error, in case serial interface could not be opened)

3.2 Menu Settings

3.2.1 Setting up SVD Monitor devices

The printing software can be used for printing on multiple SVD Monitors. Each SVD Monitor has to be configured first. For printing, the incoming virtual serial interface is used. It is assigned after installation of an SVD Monitor in the bluetooth environment (See Chapter X.X)

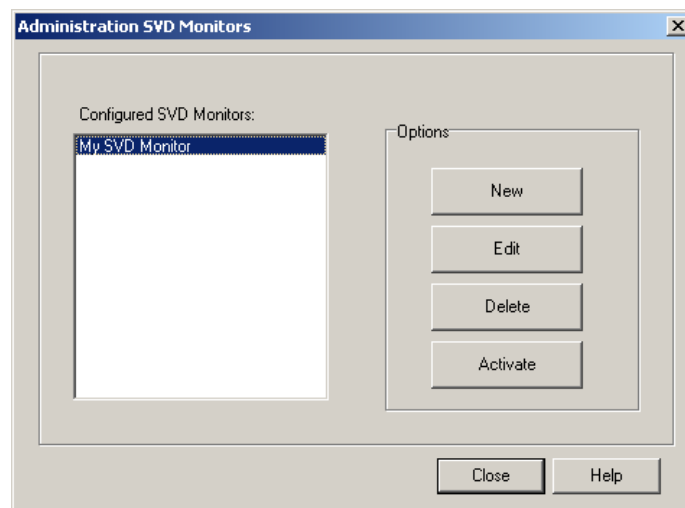


Figure 2: Administrations of SVD Monitors

In this dialog window, all installed SVD Monitors are listed. Entries may be edited, deleted or added.

New

Adds a new SVD Monitor

Edit:

Edit configuration of selected SVD Monitor

Delete:

Delete selected SVD Monitor from list

Activate

By clicking „Activate“, an SVD Monitor will be activated for printing on the PC. Thus, the selected

SVD Monitor will be set as print server on the PC. This activation has to be performed once, before measurements can be printed.

To activate an SVD Monitor, follow these steps:

- Install an SVD Monitor as described in this chapter.
- Ensure your SVD Monitor is turned on and within reach of the PC.
- Chose the SVD Monitor to be activated in list „Installed SVD Monitors“ by clicking on it.
- Click on button „Activate“

3.2.2 Adding a new SVD Monitor

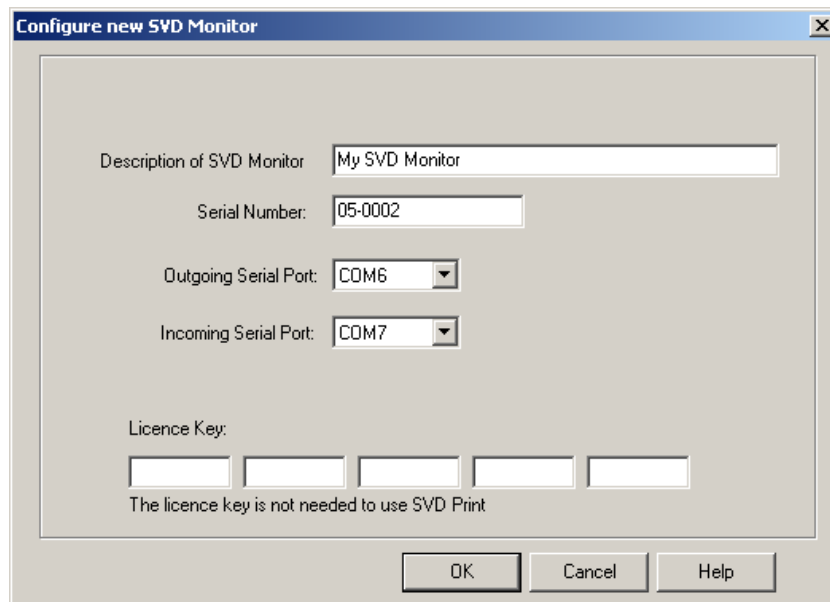


Figure 3: Configure new SVD Monitor

To add a new SVD Monitor, following information has to be provided:

Name of SVD Monitor:

Free device description the user can identify an SVD Monitor with, in case several devices are installed.

Serial Number:

Enter the serial number of your SVD Monitor. It has to be entered exactly as to read on the device label and in the device itself.

Outgoing serial interface:

Enter **outgoing** serial device that has been assigned to SVD Monitor device after its configuration in the bluetooth environment.

Incoming serial interface:

Enter **incoming** serial device that has been assigned to SVD Monitor device after its configuration in the bluetooth environment.

Licence key

Enter the 25-digit licence key that allows connections to the SVD Monitor. The licence key is shipped with the device on purchase and is valid for an SVD Monitor with corresponding serial number. The licence key is needed for the SVD Administration- and Documentationsoftware only. In case you purchased SVD Print as a stand-alone application, this field may be left blank.

3.2.3 Own Address Entry

In the dialog field "Own Address Entry" the own address/identification can be keyed in. This address is printed in the measuring print's upper area.

Own Address Entry

Enter your complete address here.
This address is printed in the measuring print's upper area.

Name of the examining place:

Dr. John Q. Public

Medical Practice

Address:

Street: Public Street 14

ZIP / City: 12345 Public City

Phone: 0123 / 456789

Fax: 0123 / 456789

E-Mail: john.q@public.de

OK Cancel Help

Figure 4: Dialog Own Address Entry

To the own address the following information can be keyed in:

Name of the examining place

Here your surgery's, company's, hospital's or the like name is keyed in. For the name two lines are available.

Address

For your address, street and number, postcode, city, phone number, fax number and e-mail can be keyed in.

20

3.2.4 Configure Printer

Using menu entry „*Printer Configuration*“ a printer can be chosen, which will be used by SVD Print to print the measurements. The printer must be configured in the Control Panel of your PC already.

Subject to changes without prior notice

Changes, updates and news will be made public in due course an our home page.

© Copyright by Telmed Medizintechnik GmbH
Breslauer Strasse 2
D-85386 Eching / Munich
Germany
www: [www: www.telmed.de](http://www.telmed.de)
mail: info@telmed.de